

An aerial photograph of a vast agricultural field, likely a cornfield, with rows of crops in various shades of green and red. A small tractor is visible in the upper right corner. A large, white, rounded rectangular overlay is centered on the image, containing the text.

25(b) Updates

Sarah Caffery

Pesticide Product Registration Manager

Office of Indiana State Chemist

POM Committee - 25(b) Workgroup Chair

Workgroup Update

- Involvement
- Guidance Documents



Workgroup Involvement

- Industry side:
 - 4 leaders have stepped up (Kim Nemeth, Chris Zemanek, Susan Lofton, Angus deWalt)
 - Monthly meetings; every other month with SLAs
- SLA side:
 - Continue to communicate as needed
 - Meetings proposed for 2024
 - Guidance Document revisions scheduled

Guidance Documents

AAPCO - 25(b) Workgroup

Updates scheduled:

- Absence of Ingredient Claims (Feb 2022)
 - *EPA Issues Guidance on "Absence of an Ingredient" Claims (Feb 2024)*
 - Include additional false or misleading claims
- Label Guidance (Dec 2021)
 - Update for claims; SLA label reviews (ie: S&D)
- State 25(b) Requirements with contact info (2020)

Rulemaking Update

Timeline

Potential update from EPA?

Timeline

EPA Seeks Comments: Release January 19, 2021

- [EPA Press Release](#)

Proposed Rule: Posted April 8, 2021

- [EPA Website – ANPRM](#)
- [Regulations.gov Docket](#)

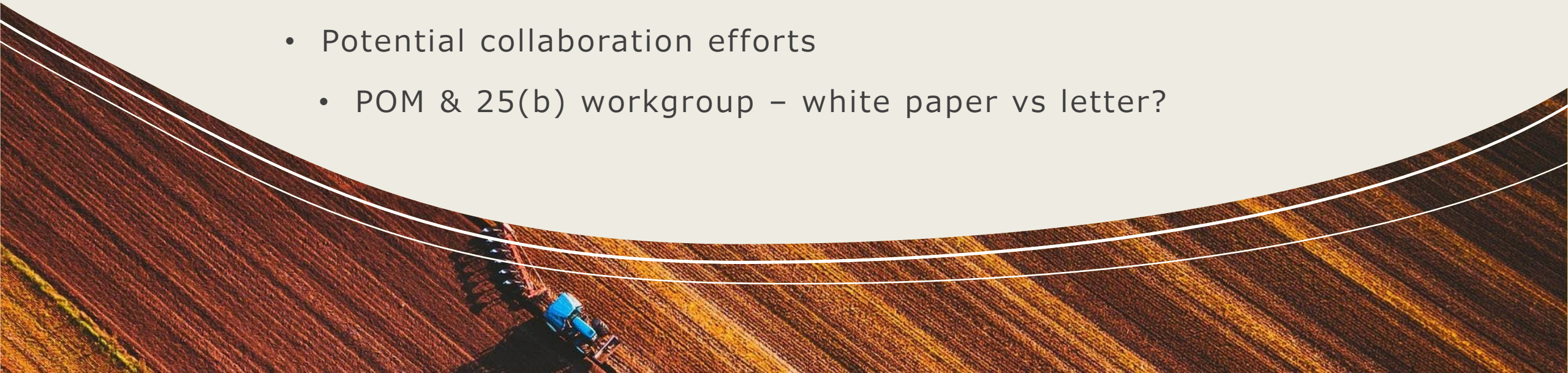
Comments Due: July 7, 2021

EPA is currently working on next steps

Action Items

Engage with EPA on the importance of 25(b) rulemaking

- Include:
 - Data collected for non-compliant products
<https://forms.office.com/r/xVqC26Y98d>
 - Issues that SLAs continue to see
 - Recommendations
- Potential collaboration efforts
 - POM & 25(b) workgroup – white paper vs letter?



The background features several overlapping organic shapes with different textures. On the left, there is a large purple shape, a central brown shape with small dark specks, and a bottom-left green shape with a fibrous texture. On the right, there are two smaller brown shapes, one with a dark brown speckled texture and another with a lighter brown fibrous texture. All shapes are outlined with thin white borders.

Thank You

Sarah Caffery

scaffery@purdue.edu

Office of Indiana State Chemist

Pesticide Product Registration Manager

POM Committee

25(b) Workgroup Chair