

Revised State Certification Plans: Certification Rule Updates 40 CFR 171

**Matthew Lloyd
EPA's Certification and Worker Protection Branch
Office of Pesticide Programs/Pesticide Re-evaluation Division**

**Patricia Livingston
EPA's Region 4
Land, Chemicals, and Redevelopment Division**

**SFIREG
December 8, 2020**



Outline

- Refresher
 - CPA Rule Dates (for Reviews)
 - CPA Plan Review Dates
- Status of Certification Plan Reviews
- Certification Plan Review Coordination/Resources
- Early Themes from Plan Reviews
- COVID-19 & Annual Reporting
- EPA Contacts



Refresher – Certification of Pesticide Applicators (CPA) Rule Dates

- Certifying authorities had until **March 4, 2020** to submit modified certification plans to EPA
- **Existing plans remain in effect** until EPA approves or rejects the revised plan or **March 4, 2022**, whichever is earlier
- Timeframe for implementation of EPA-approved modified certification plans will be on a **case-by-case basis** as part of EPA's review and approval of each revised certification plan (includes implementation schedule)



Refresher - Plan Review Dates

Description	Dates
Regional review of initial State Lead Agency/Tribal submission	~March 4, 2020 – July 6, 2020
Regional Detailed Review of the submission	~March 2020 – May 2021
HQ Detailed Review of the submission	Present – November 2021



Certification Plan Review Status

Plans submitted	Plans with HQ	From Regions
56 SLAs	8	1, 2, 3, 6
6 Tribal (including MOU/MOAs)	0	5, 7, 8,10
1 Tribal (EPA-Administered)	1	N/A
5 Federal	5	N/A



Plan Review Coordination

- **HQ & Regions – program staff coordination**
 - Bi-weekly conference calls
 - HQ point of contact assigned to each Region
- **HQ & Regions – program staff & legal counsel coordination**
 - Bi-weekly conference calls
- **Review/approval process**
 - SLA summary packet released Oct. 11, 2019
- **Upcoming Pesticide Educational Resources Collaborative (PERC) materials**

Upcoming PERC CPA Materials and Projects

- Non-certified RUP Applicator Pesticide Safety Training Video
- Manual(s)/Exam(s) for Non-Soil Fumigation Categories
- Core Manual Addendum for Private and Commercial Applicators

Web site: <http://pesticideresources.org>



Early Themes from Plan Reviews

- State resources to
 - Update/develop exam and manual content
 - Support drafting laws/regs
 - Update legal authorities to match CPA requirements
- Level of detail in the state regs
- Level of detail in implementation plans



OCSPS COVID-19 Memo



Environmental Topics

Laws & Regulations

About EPA

Search EPA.gov



Pesticide Worker Safety

CONTACT US

SHARE



Pesticide Worker Safety
Home

How EPA Protects Workers
from Pesticide Risk

Recognition and
Management of Pesticide
Poisonings

In Case of Pesticide
Poisoning

Agricultural Worker
Protection Standard (WPS)

How to Get Certified as a
Pesticide Applicator

Pesticide Containers

Pesticide Containment
Structures

Guidance regarding the Certification of Pesticide Applicators during the COVID-19 Public Health Emergency

EPA has released temporary guidance regarding the certification of pesticide applicators of restricted use pesticides that offers flexibility during the COVID-19 public health emergency. This guidance is temporary, and EPA will assess the continued need and scope of this temporary guidance on an ongoing basis.

You may need a PDF reader to view some of the files on this page. See EPA's [About PDF page](#) to learn more.

<https://www.epa.gov/pesticide-worker-safety/guidance-regarding-certification-pesticide-applicators-during-covid-19>



Annual Reporting

- SLAs required to report 2020 applicator totals and certification plan changes Certification Plan and Reporting Database (CPARD)
- You should receive instructions from your Regional program contact and/or project officer with the user guide
- Please begin reporting if you haven't already



EPA Regional C&T Contacts

1 - Robert Koethe

2 - Tara Glynn

3 - Courtenay Hoernemann

4 - **Regional Sublead for C&T**

Donnette Sturdivant, Chief, LCRD/RCB

Patricia Livingston

5 - Donald Baumgartner

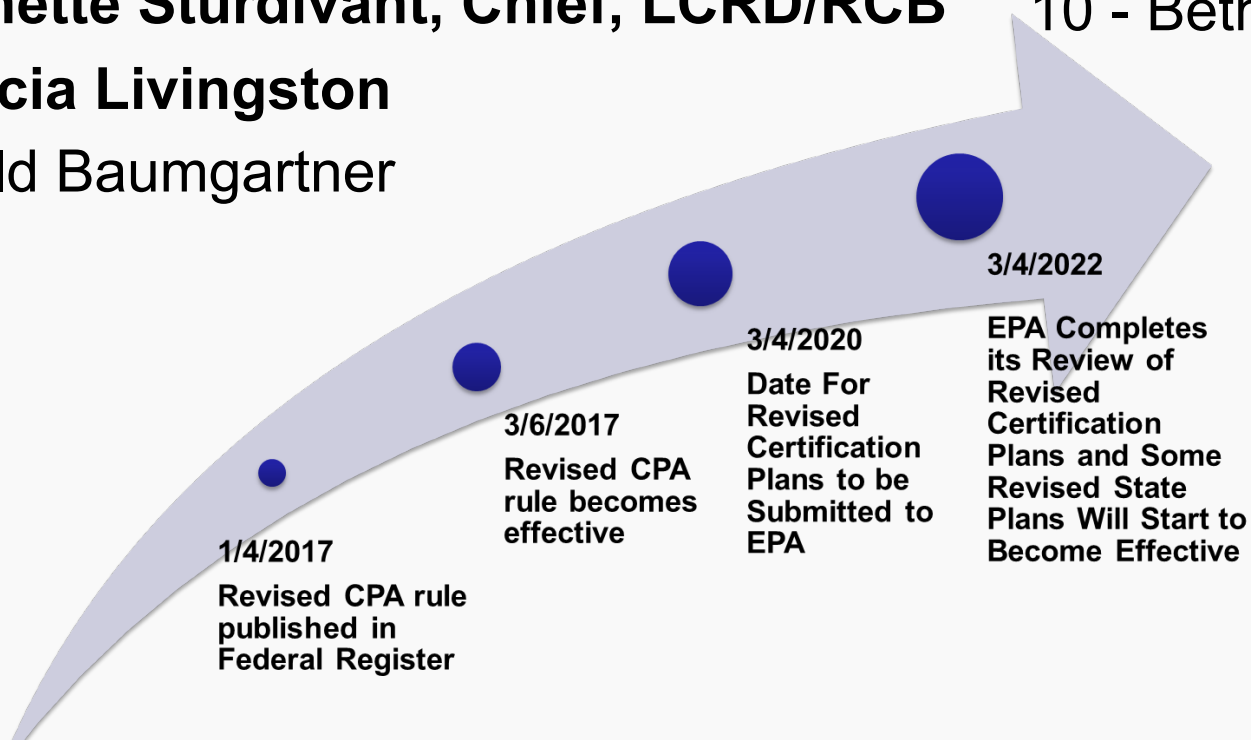
6 - Gregory Weiler

7 - Bethany Olson

8 - Blake Huff

9 - Katy Wilcoxon

10 - Bethany Plewe





Office of Pesticide Programs C&T Contacts

Carolyn Schroeder, Chief, CWPB
schroeder.carolyn@epa.gov

Matthew Lloyd
lloyd.matthew@epa.gov

Jeanne Kasai
kasai.Jeanne@epa.gov

